



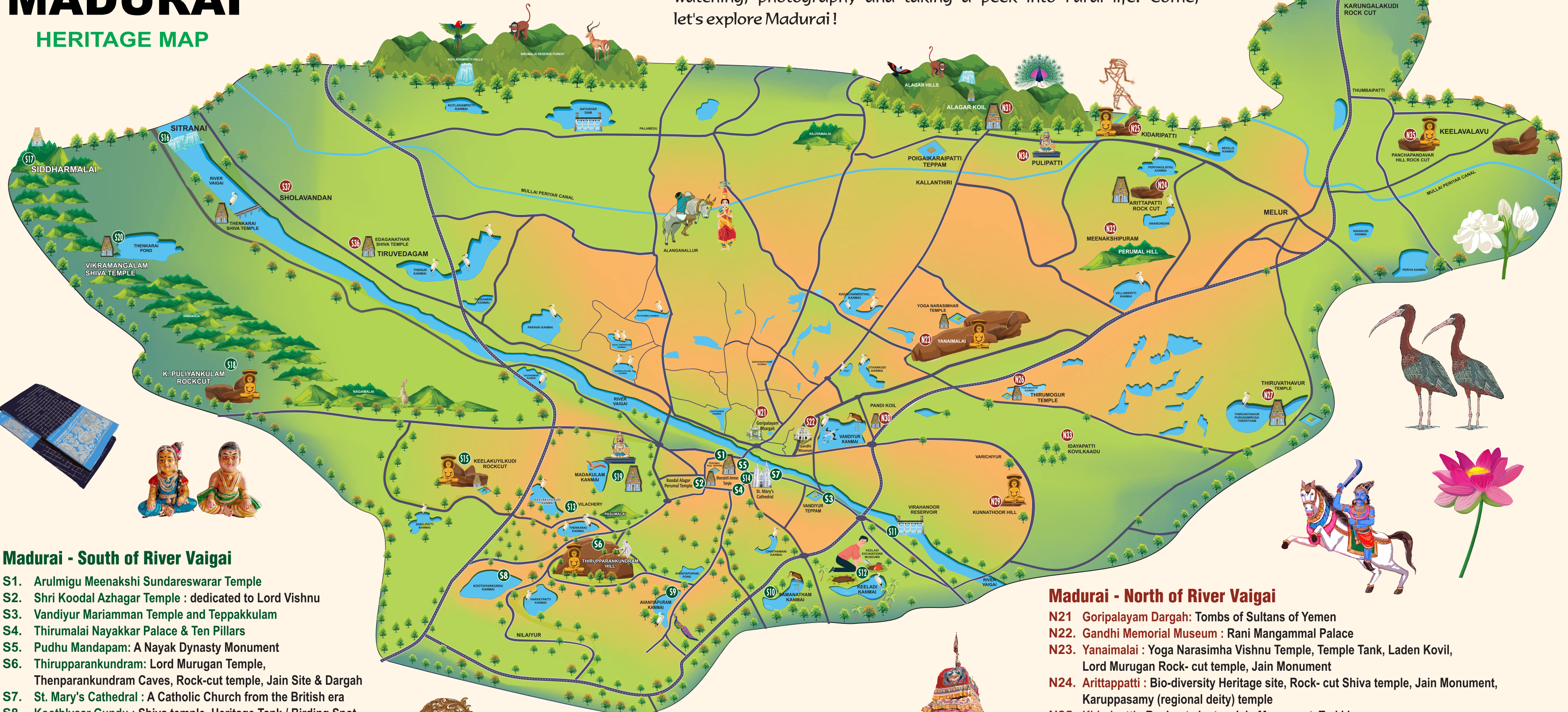
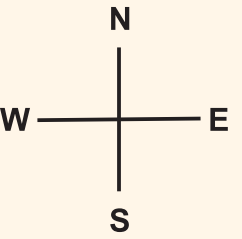
# MADURAI HERITAGE MAP

integrated with google maps. for direction & more details of the heritage monuments Scan QR Code

Scan QR code



Madurai has many popular and well known monuments, places of worship and palaces within the city limits. This map also lists the lesser visited treasures of Madurai located on the outskirts of the city. It emphasizes on bringing attention to the natural heritage, hillocks and water bodies. These sites are perfect for short treks, bird watching, photography and taking a peek into rural life! Come, let's explore Madurai!

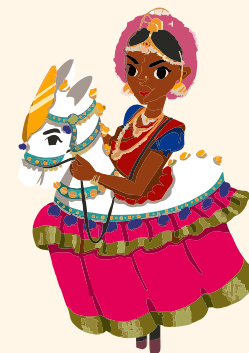


## Madurai - South of River Vaigai

- S1. Arulmigu Meenakshi Sundareswarar Temple
- S2. Shri Koodal Azhagar Temple : dedicated to Lord Vishnu
- S3. Vandiyur Mariamman Temple and Teppakkulam
- S4. Thirumalai Nayakkar Palace & Ten Pillars
- S5. Pudhu Mandapam: A Nayak Dynasty Monument
- S6. Thirupparankundram: Lord Murugan Temple, Thenparankundram Caves, Rock-cut temple, Jain Site & Dargah
- S7. St. Mary's Cathedral : A Catholic Church from the British era
- S8. Koothlyaar Gundu : Shiva temple, Heritage Tank / Birding Spot
- S9. Avaniyapuram Tank : Birding Spot
- S10. Samanatham Tank : Birding Spot
- S11. Viraganur : Water Reservoir, Dam, Birding Spot
- S12. Keeladi Heritage Museum
- S13. Vilachery Village : Crafting Pottery& Dolls
- S14. Vilakuthoon : A British era monument
- S15. Keezhakuyillkudi : Jain site, Trekking, Temple Tank, Samanar malai
- S16. Sitranai : Ancient Kuruvithurai (Check Dam)
- S17. Siddhar Malai : Jain Monument, Shiva temple, Trekking
- S18. Kongar Puliyankulam : Jain beds, Trekking
- S19. Madakkulam : Ayyanar temple and tank, Birding Spot
- S20. Vikramangalam : Ancient Trade Centre, Shiva Temple, Water body, Birding Spot, Flower Cultivation

## Madurai - North of River Vaigai

- N21. Goripalayam Dargah: Tombs of Sultans of Yemen
- N22. Gandhi Memorial Museum : Rani Mangammal Palace
- N23. Yanaimalai : Yoga Narasimha Vishnu Temple, Temple Tank, Laden Kovil, Lord Murugan Rock- cut temple, Jain Monument
- N24. Arittappatti : Bio-diversity Heritage site, Rock- cut Shiva temple, Jain Monument, Karuppasamy (regional deity) temple
- N25. Kidaripatti : Rock art cluster, Jain Monument, Trekking
- N26. Thirumohur : Vaishnavite temple & temple tank
- N27. Thiruvathavur : Shiva temple & tank, Birding Spot
- N28. Karungalakudi : Jain Monument, Rock-art-site
- N29. Kunnathoor-Varichiyur : Rock-cut Shiva temple, Jain Monument, Hero stone/ Tamil Brahmi Inscriptions site, Kunnathoor tank, Birding spot
- N30. Pandi Muni Kovil : Folk Deity Temple
- N31. Alagar Kovil & Poigaikaraipatti : Vaishnavite Temple, Temple Tank, Trekking, Birding Spot
- N32. Meenakshipuram / Maangutam : Jain site, Trekking, Site of Tamil Brahmi Inscriptions
- N33. Idayapatti Kovilkaadu : Temple forest, Tree walk, Bird Watching Site
- N34. Pulipatti : Periya Puli Ayyanar, Karuppasamy (local deity) temple & temple tank
- N35. Keezhalavavu : Jain site, Trekking
- N36. Thiruvedagam : Shiva temple close to the banks of River Vaigai
- N37. Sholavandhan : Thenkarai Moolanadhaswamy Shiva Temple, Temple Tank, Birding Spot



details of more heritage sites are listed on [www.intachmadurai.org](http://www.intachmadurai.org)